



HANSAFIT

Installation and maintenance guide





4-5



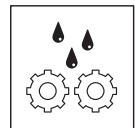
6-9



10-11



12-13



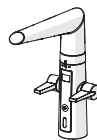
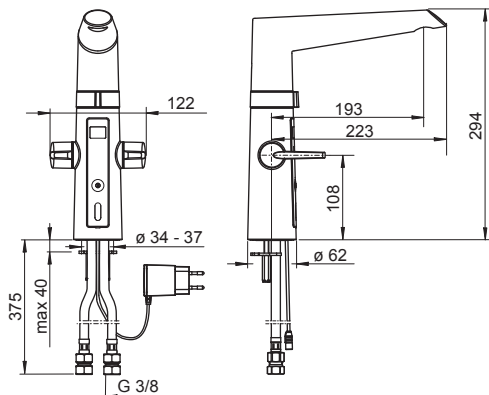
14-20



6523 2213

I (ISO 3822)
 100 - 1000 kPa
 0.20 l/s (300 kPa)
 290 kPa (0.2 l/s)
 max. +70°C

IP 54 / transformer IP 20
 230 / 5 V



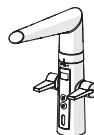
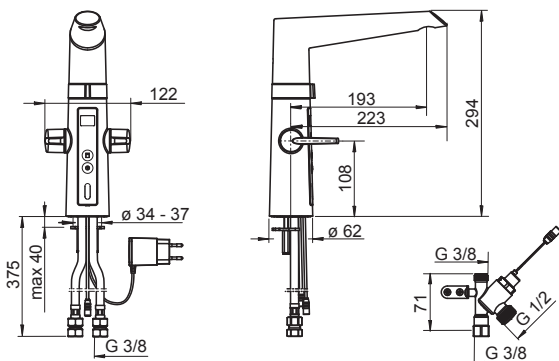
mpi.hansa.com/65232213

(EMC 2014/30/EU)

6524 2213

I (ISO 3822)
 EN 1111
 100 - 1000 kPa
 0.20 l/s (300 kPa)
 290 kPa (0.2 l/s)
 max. +70°C

IP 54 / transformer IP 20
 230 / 5 V



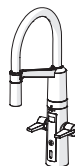
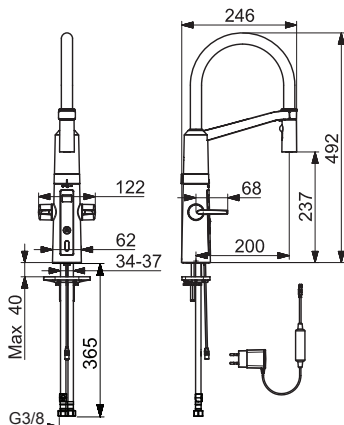
mpi.hansa.com/65242213

(EMC 2014/30/EU)

6525 2213

EN 200 , EN 15091, EN 1111
 100 - 1000 kPa
 0.20 l/s (300 kPa)
 max. +70°C

IP 55 / transformer IP 20
 230 / 5 V



mpi.hansa.com/65252213

(EMC 2014/30/EU)

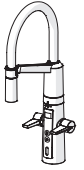
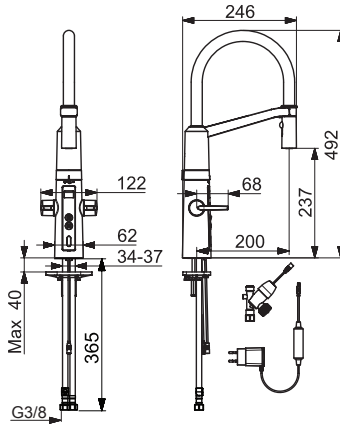


6526 2213

EN 200 , EN 15091, EN 1111
100 - 1000 kPa
0.20 l/s (300 kPa)
max. +70°C

IP 55 / transformer IP 20
230 / 5 V

CE (EMC 2014/30/EU)



mpi.hansa.com/65262213

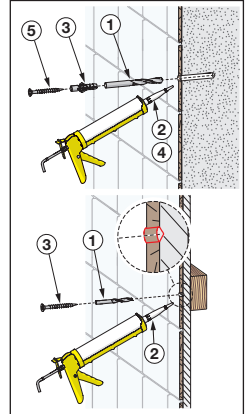
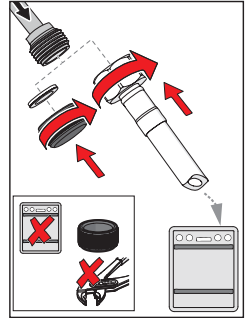
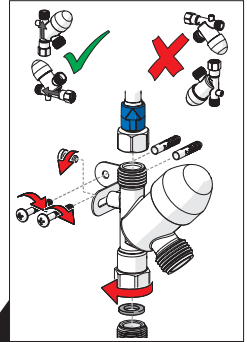
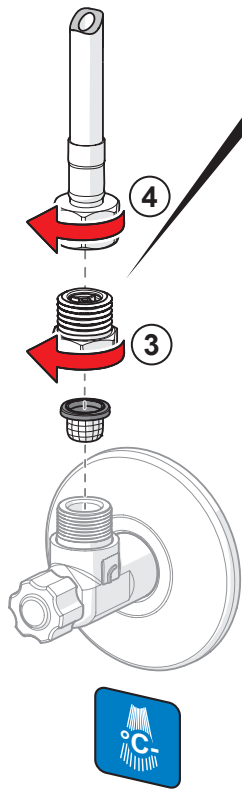
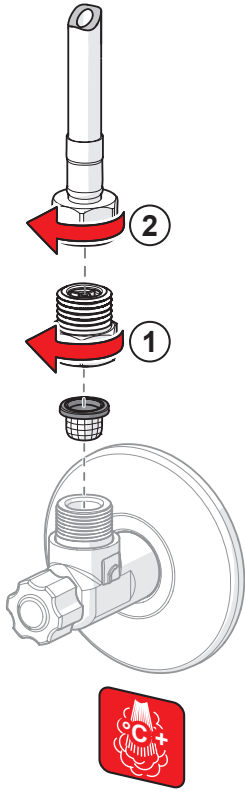


19



① ② ③ ④

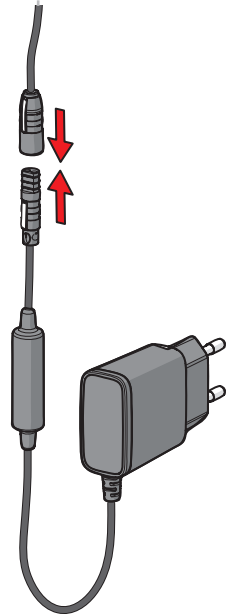
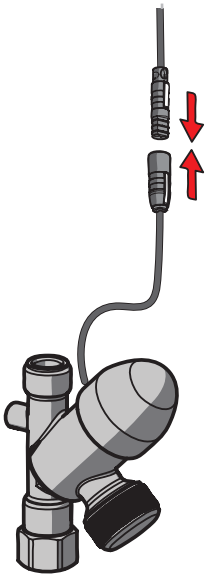
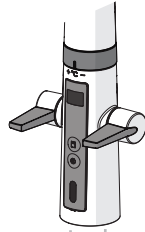
2

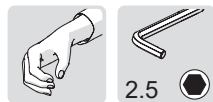




① ③

③

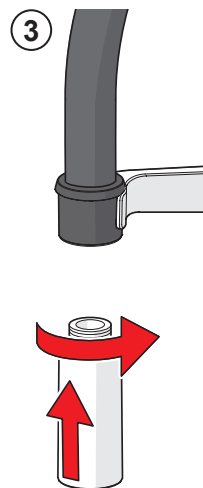
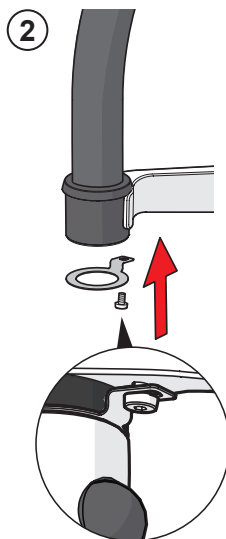
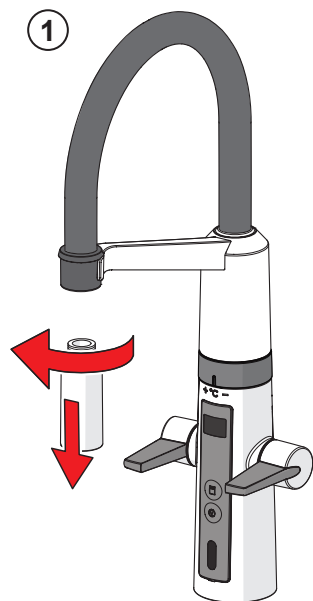


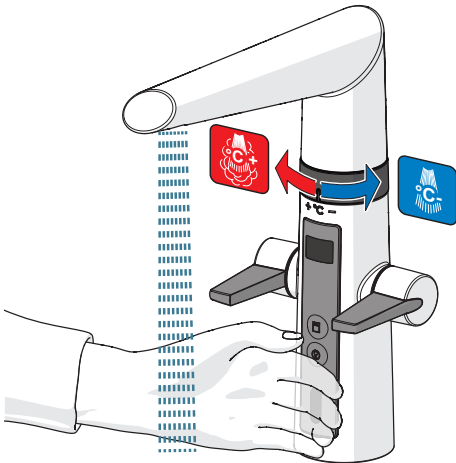


① ③

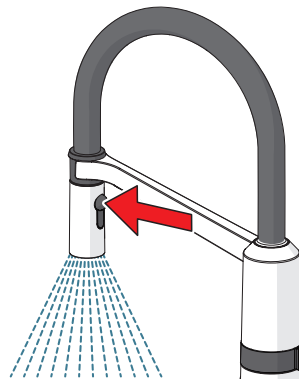
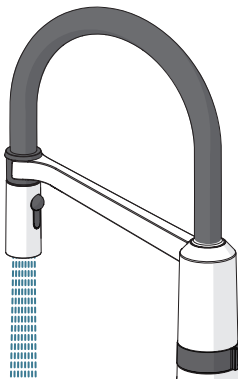
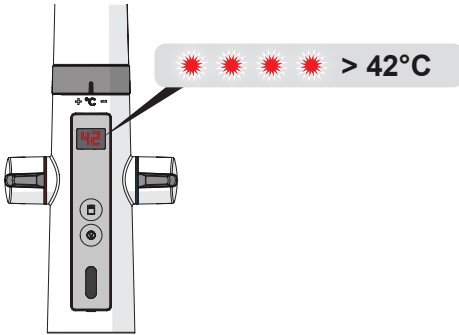
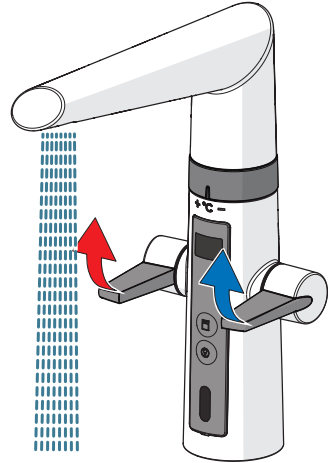
②

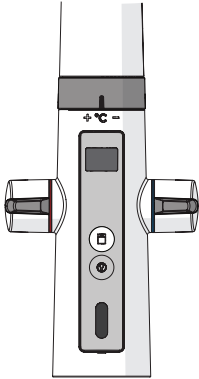
4 EN 806



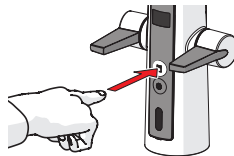


ON 4 s

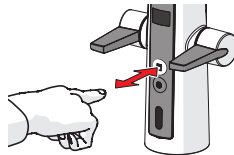





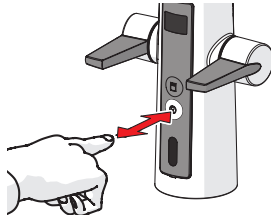
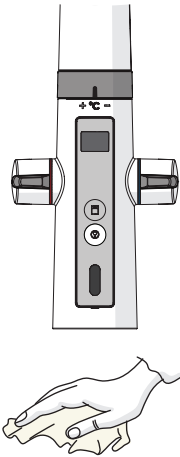
 **ON 4 h**
automatic OFF



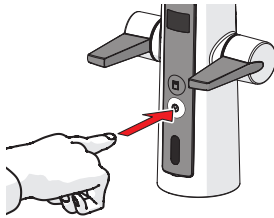
 **ON 12 h**
automatic OFF



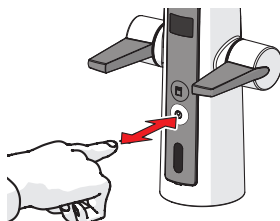
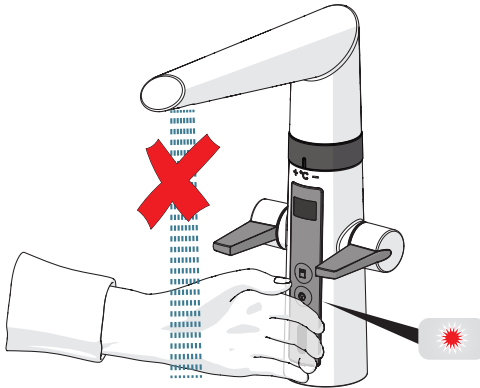
 **OFF**



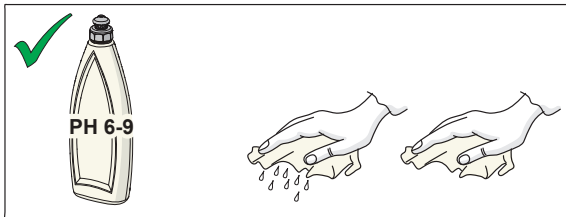
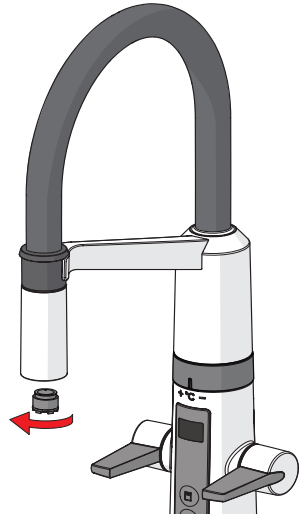
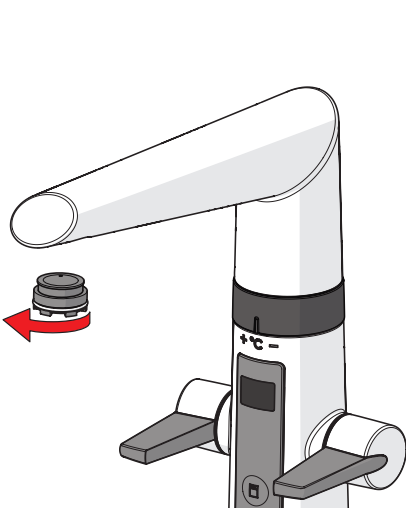
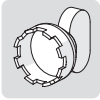
OFF 2 min
automatic ON

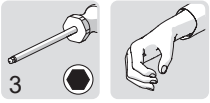


OFF

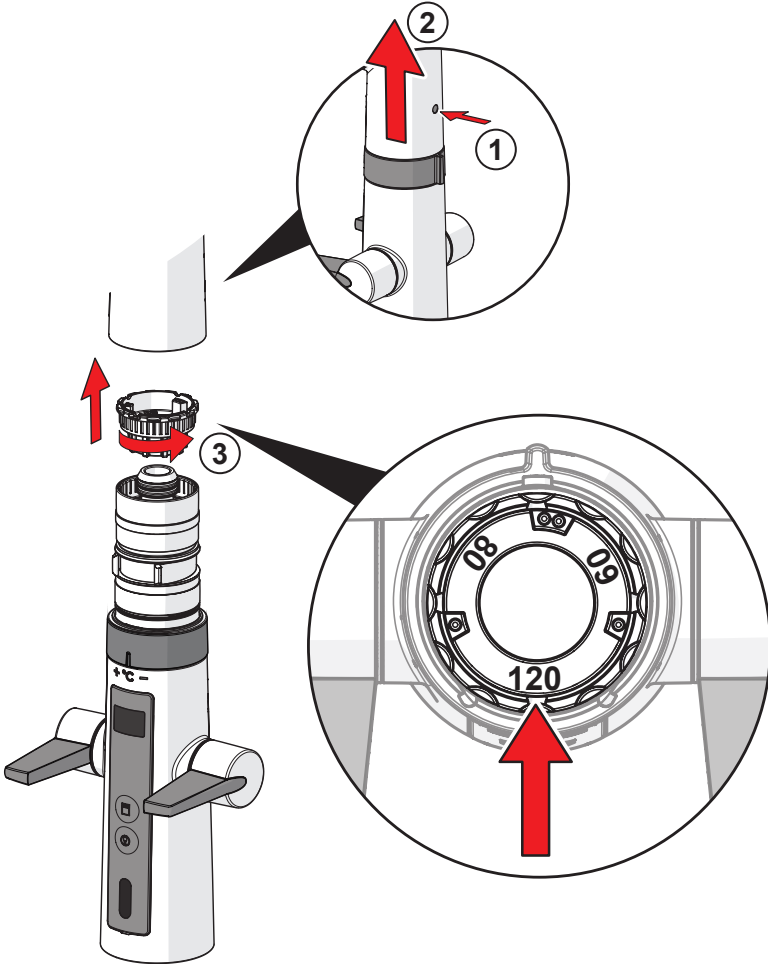


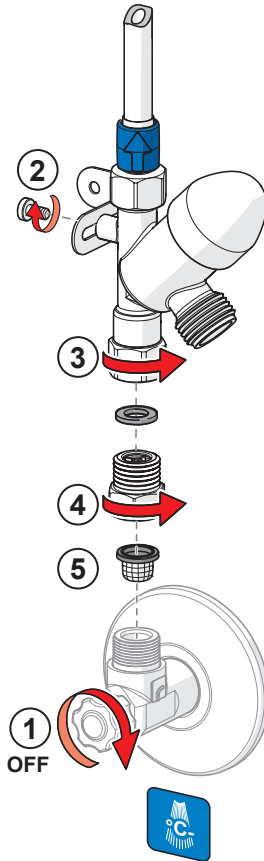
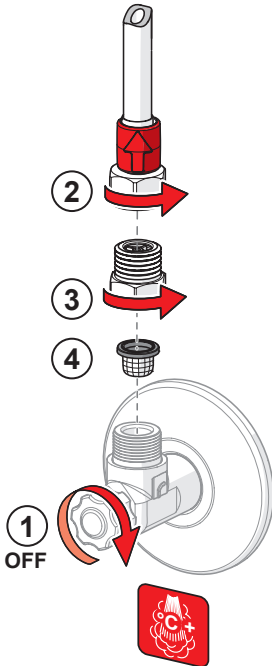
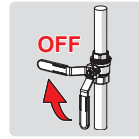
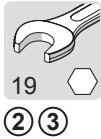
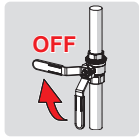
ON

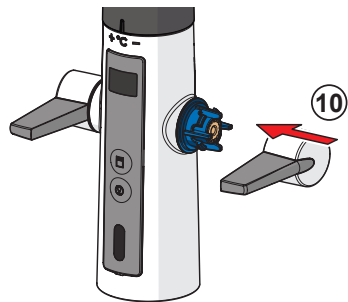
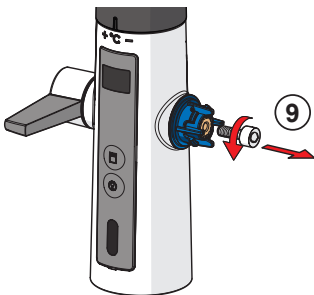
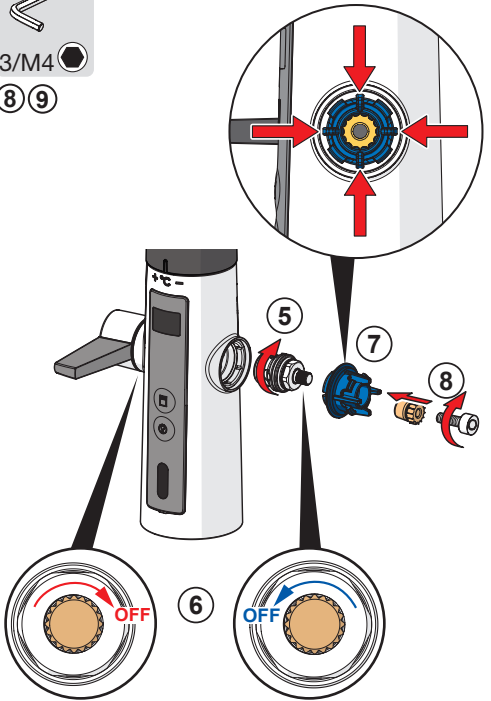
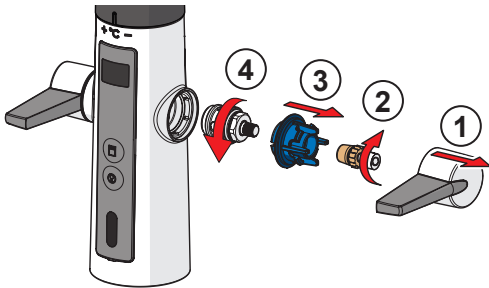
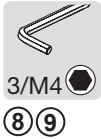
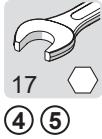
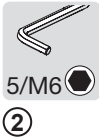
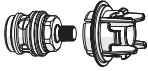


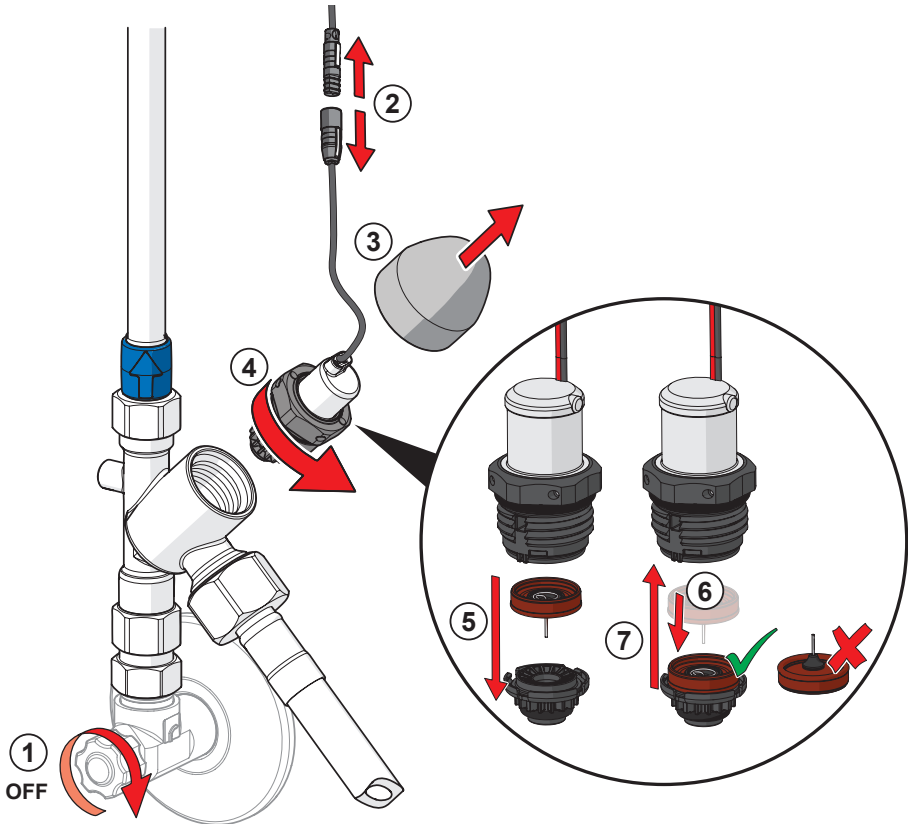
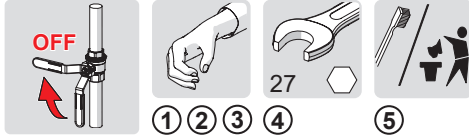


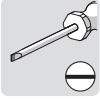
- ①
- ② ③



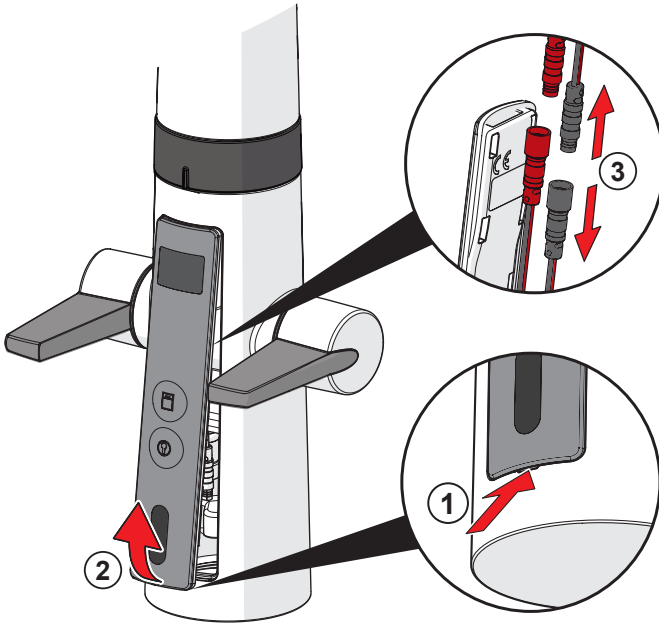


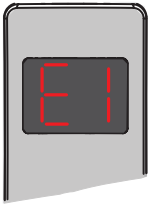




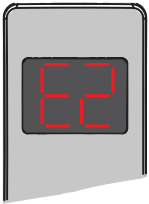
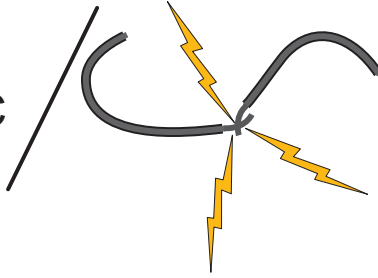


①

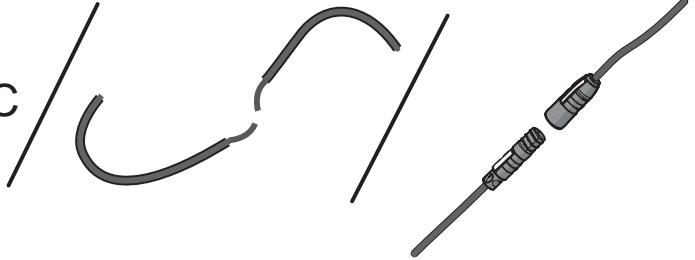


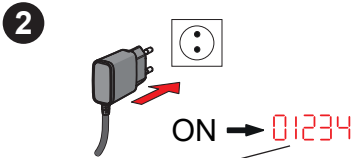
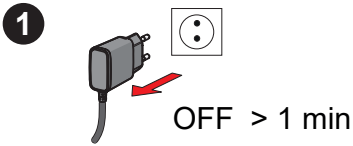


> 75°C

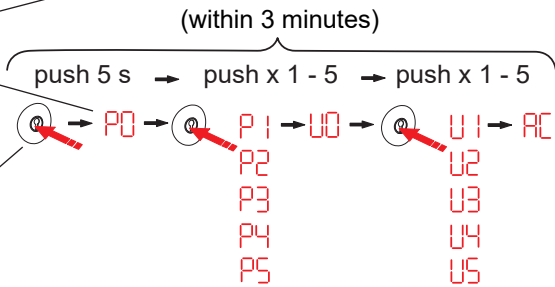
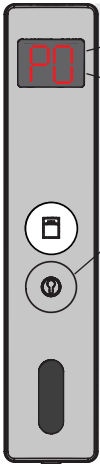


< 0°C





3



	P1	P2	P3	P4	P5
Afterflow period (touchless function)	2 s	10 s	0	10 s	OFF
Max. flow period	4 s	40 s	12 h	30 s	ON
Automatic flush	8 s	60 s	24 h	60 s	-
Automatic flush period	10 s	120 s	48 h	120 s	-
ON / OFF	20 s	180 s	72 h	180 s	FS

FS = Factory Settings

Oras Group is a powerful European provider of sanitary fittings: the market leader in the Nordics and a leading company in Continental Europe. The company's mission is to make the use of water easy and sustainable and its vision is to become the European leader of advanced sanitary fittings. Oras Group has two strong brands: Oras and Hansa.

The Group's head office is located in Rauma, Finland, and the Group has three manufacturing sites: Kralovice (Czech Republic), Olesno (Poland) and Rauma (Finland). Oras Group employs approximately 1,200 people in twenty countries. Oras Group is owned by Oras Invest, a family company and an industrial owner.

HANSA Armaturen GmbH
P. O. BOX 81 02 40
D-70519 Stuttgart
Sigmaringer Strasse 107
D-70567 Stuttgart
Tel.: +49 711 16 14 0
Fax: +49 711 16 14 368
info@hansa.de
www.hansa.com



943457D-01-22